

Paddy Cultivation Area Map

District: Jaffna

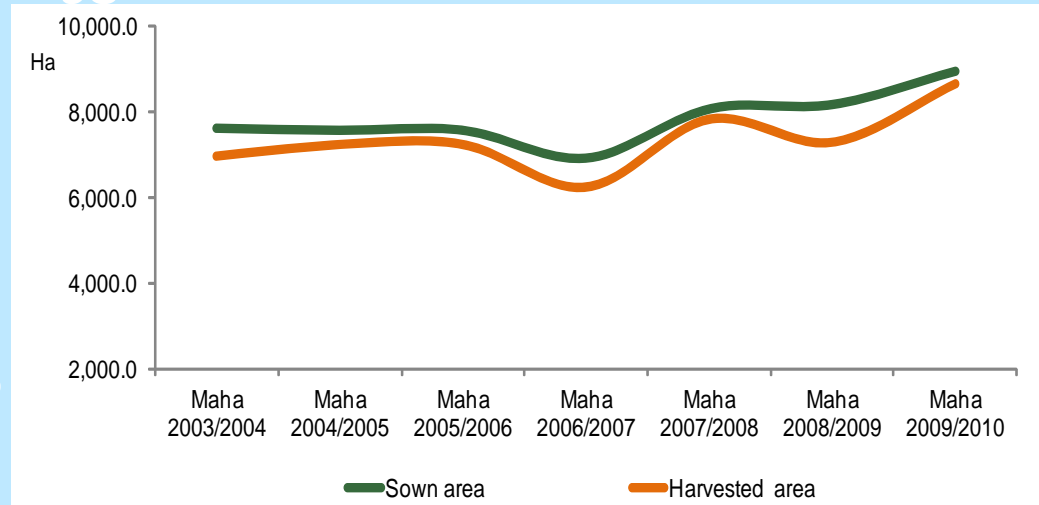
79°40'30"E 79°47'0"E 79°53'30"E 80°0'0"E 80°6'30"E 80°13'0"E 80°19'30"E 80°26'0"E 80°32'30"E



Kilometers

0 5 10

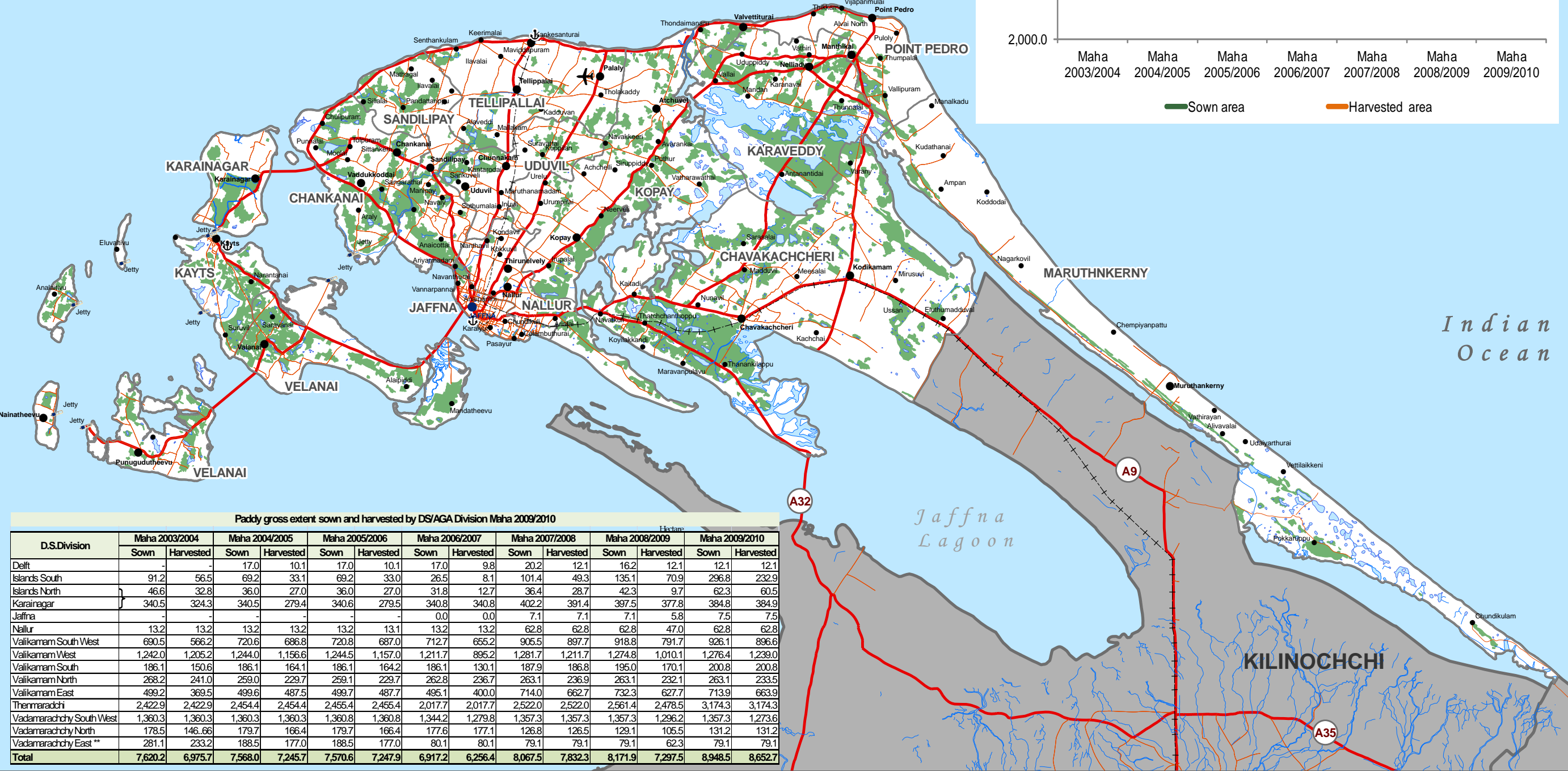
Paddy gross extent sown and harvested area trend from 2003 to 2010



9°53'0"N
9°46'30"N
9°40'0"N
9°33'30"N
9°27'0"N

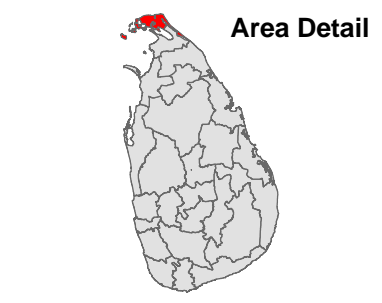


9°27'0"N



Paddy gross extent sown and harvested by DS/AGA Division Maha 2009/2010

D.S.Division	Maha 2003/2004		Maha 2004/2005		Maha 2005/2006		Maha 2006/2007		Maha 2007/2008		Maha 2008/2009		Maha 2009/2010	
	Sown	Harvested	Sown	Harvested	Sown	Harvested	Sown	Harvested	Sown	Harvested	Sown	Harvested	Sown	Harvested
Delft	-	-	17.0	10.1	17.0	10.1	17.0	9.8	20.2	12.1	16.2	12.1	12.1	12.1
Islands South	91.2	56.5	69.2	33.1	69.2	33.0	26.5	8.1	101.4	49.3	135.1	70.9	296.8	232.9
Islands North	46.6	32.8	36.0	27.0	36.0	27.0	31.8	12.7	36.4	28.7	42.3	9.7	62.3	60.5
Karainagar	340.5	324.3	340.5	279.4	340.6	279.5	340.8	340.8	402.2	391.4	397.5	377.8	384.8	384.9
Jaffna	-	-	-	-	-	-	0.0	0.0	7.1	7.1	7.1	5.8	7.5	7.5
Nallur	13.2	13.2	13.2	13.2	13.2	13.1	13.2	13.2	62.8	62.8	62.8	47.0	62.8	62.8
Vaikamam South West	690.5	566.2	720.6	686.8	720.8	687.0	712.7	655.2	905.5	897.7	918.8	791.7	926.1	896.6
Vaikamam West	1,242.0	1,205.2	1,244.0	1,156.6	1,244.5	1,157.0	1,211.7	895.2	1,281.7	1,211.7	1,274.8	1,010.1	1,276.4	1,239.0
Vaikamam South	186.1	150.6	186.1	164.1	186.1	164.2	186.1	130.1	187.9	186.8	195.0	170.1	200.8	200.8
Vaikamam North	268.2	241.0	259.0	229.7	259.1	229.7	262.8	236.7	263.1	236.9	263.1	232.1	263.1	233.5
Vaikamam East	499.2	369.5	499.6	487.5	499.7	487.7	495.1	400.0	714.0	662.7	732.3	627.7	713.9	663.9
Thermarachchi	2,422.9	2,422.9	2,454.4	2,454.4	2,454.4	2,455.4	2,017.7	2,017.7	2,522.0	2,522.0	2,561.4	2,478.5	3,174.3	3,174.3
Vadamarachchy South West	1,360.3	1,360.3	1,360.3	1,360.3	1,360.8	1,360.8	1,344.2	1,279.8	1,357.3	1,357.3	1,357.3	1,296.2	1,357.3	1,273.6
Vadamarachchy North	178.5	146.66	179.7	166.4	179.7	166.4	177.6	177.1	126.8	126.5	129.1	105.5	131.2	131.2
Vadamarachchy East**	281.1	233.2	188.5	177.0	188.5	177.0	80.1	80.1	79.1	79.1	62.3	79.1	79.1	79.1
Total	7,620.2	6,975.7	7,568.0	7,245.7	7,570.6	7,247.9	6,917.2	6,256.4	8,067.5	7,832.3	8,171.9	7,297.5	8,948.5	8,652.7



Legend

- Main Town
- Village
- Airport
- Port
- Ferry point
- Main Road
- Minor Road
- River
- Lake/Tank
- Paddy Cultivation Area
- GN Boundary
- DS Boundary
- District Boundary

Note(s):

Data source(s):
Survey Department,
Department of Agriculture, Jaffna

This map is designed for printing on A3 size

The boundaries, names and the designations used on this map do not imply official endorsement or acceptance by the United Nations.

Updated as at: December 2011

Produced on: 01-Dec-2011

Projection / Datum: Transverse Mercator Kandawala

Admin boundaries provided by: Survey Department, Government of Sri Lanka

Map Number: UNDP/LK/Jaffna/Admin/01/V1

Produced through the generous support of:

© 2011 Early Recovery Unit,
United Nations Development Programme (UNDP)
UNDP, 202-204, Bauddhaloka Mawatha, Colombo - 07